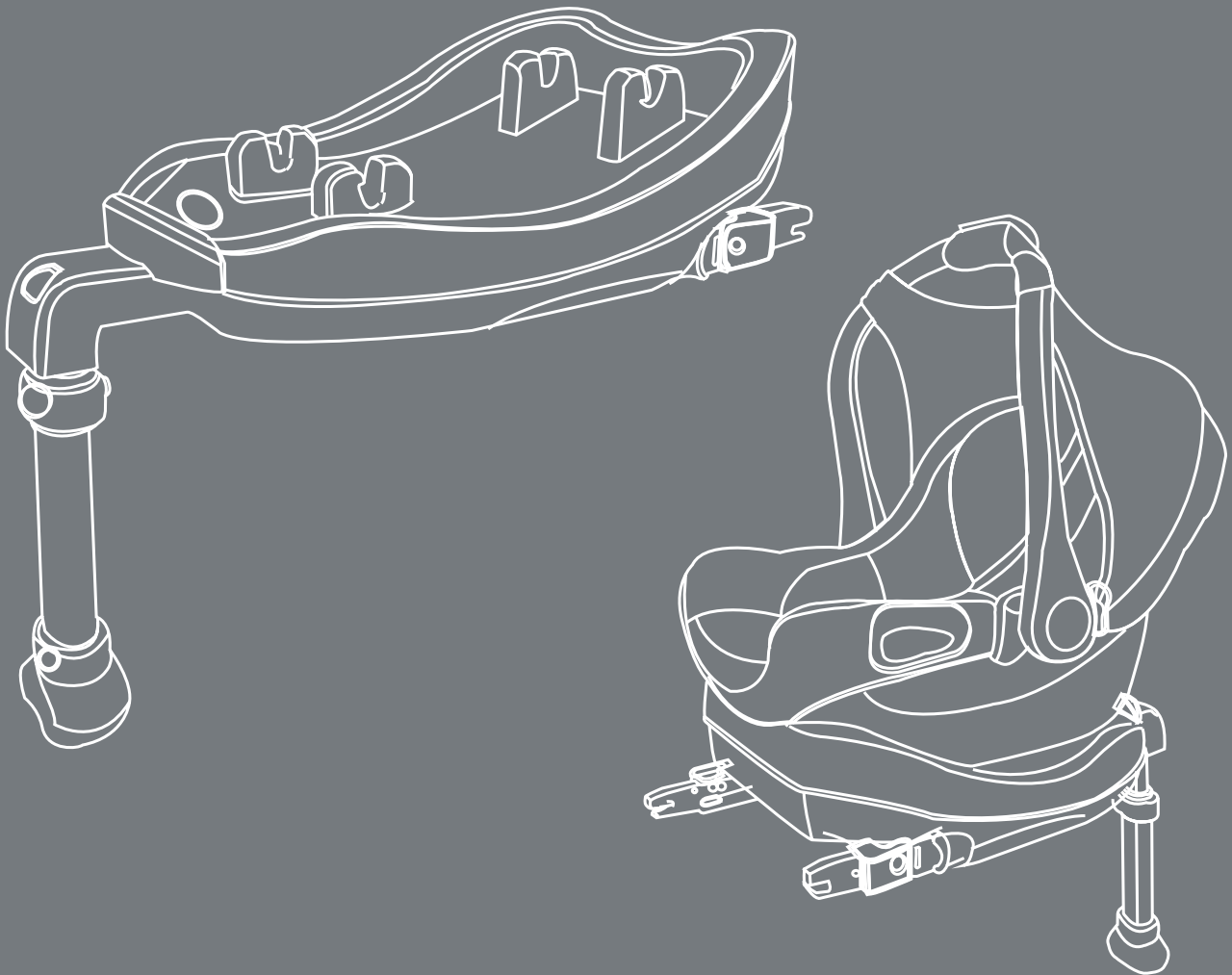


ISOFix

Child Restraint System



Assembly Instructions

ISOFIX CLASS D

NOTICE

1. This is an ISOFIX CHILD RESTRAINT SYSTEM.

It is approved to Regulation no.44,04 series of amendments for general use in vehicles fitted with ISOFIX anchorages systems. It will fit vehicles with positions approved as ISOFIX positions(as detailed in the vehicle handbook),depending on the category of the child seat and of the fixture. The mass group and the ISOFIX size class for which this device is intended is :CLASS D, This seat can be used for children of 0-13kg in weight.

This child restraint is classified for "Semi-universal" use and is suitable for fixing into the seat positions of the following cars:

1.PLEASE READ THOROUGHLY BEFORE COMMENCING INSTALLATION AS AN INCORRECT INSTALLATION COULD BE DANGEROUS. 2. PARENTS SHOULD NOT UNDER ANY CIRCUMSTANCES USE THIS CHILDRESTRAINT ON A PASSENGER SEAT EQUIPPED WITH AN AIRBAG.

3. The child seat must only be installed in the rearward facing position. **4.** Never use the child seat without fastening the child's correctly, and never attempt to use it without fastening it into the car as described in these fitting instructions, if the shoulder height is not ok, Please re-install the seat again. **5.** It is most important that the seat belt is correctly routed and the child seat tightened down on the upholstery as firmly as possible to ensure maximum protection a recommended method is shown in these instructions. **6.** Do not add or modify this product in any way. **7.** Never use this product if it has been in an accident, or if it has become badly worn. Periodically inspect the bulck for wear, paying particular attention to attachment points, stitching and adjusting devices. **8.** Do not leave a child in the seat unattended at any time. **9.** Ensure that no part of the seat or seat belt is trapped in a door or a folding seat. If your car has a folding rear seat, ensure that it is correctly latched in its upright position. **10.** Car interiors can become very hot when left standing in direct sunlight it is therefore recommended that the child seat, when not in use, is covered by a towel etc. This prevents components, particularly those attached to the child seat, becoming hot and burning the child. **11.** In the event of an emergency it is important that the child can be released quickly. This means that the buckle is not fully tamperproof and therefore your child should be persuaded never to play with the buckle. **12.** Luggage and other heavy objects should be secured in the car. Loose objects are liable to cause injury in the event of an accident. **13.** The child seat must not be used without the cover. **14.** Never place your child seat on a table or work surface. **15.** This seat can be used for children of 0-13kg in weight and is used in conjunction with a 3-point lap and diagonal safety belt in the rear-facing position only. **16.** When the child seat is not in use, it is recommended that it is fastened into the car with a seat belt to avoid cause injury in the event of an accident. **17.** In an emergency your child can be released quickly by pressing the red button on the buckle. **18.** Store this child seat in a safe place when it is not being used. Avoid placing heavy objects on top of it. **19.** If you travel with passengers using both the front and rear passenger seats, the lighter occupants should be in the rear and the heavier occupants in the front of the vehicle. **20.** Do not allow your child seat to come into contact with corrosive substances e.g. battery acid. **21.** Do not leave the child seat with a child in it on a raised surface, such as a table work top, bed or shopping trolley, due to the risk of falling. **22.** The manufacturer can only guarantee the safety of the seat if it is used by the original owner. **23.** We strongly advise against using a second-hand product, as you can never be sure of its history. **24.** Always check to make sure the seat fits in your car properly before purchasing it.

IMPORTANT: RETAIN FOR FUTURE REFERENCE. READ CAREFULLY

Tutti Frutti Direct Ltd. Unit 3, 1000 North Circular Road, London, UK, NW2 7JP
t: +44 (0) 208 368 5800
e: customerservice@tuttibambini.co.uk
www.tuttibambini.com

Hello,

Congratulations on your new arrival!

We're so pleased that you have chosen our ISOFix Base to use in conjunction with your ByGo® Car Seat.

Please take a few moments to read this guide on how to safely install this ISOFix Base correctly onto the ISOfix fitting points in your car.

Wishing you the best of luck on your new journey.

Team Tutti

The Tutti Bambini ISOFix base is designed to stay in your car, where it attaches to the ISOFix fitting points. Having this base fitted in your car then allows your ByGo® car seat to simply click onto the base ensuring that your little one is safe and secure in their car seat.

Features:

- Simple 'Click & Go' Installation
- Uses ISOfix attachment points to install in car
- Indicators confirm correct installation
- Floor support provides extra safety in the event of frontal impact
- Best for use with the Tutti Bambini ByGo® Group 0+ Car Seat

Contents

Vehicle usage	5
Parts and fittings	6
Fitting the ISOFix base	7
ISOFix child restraint system	11
Installation	12
Loosening the shoulder straps	13
The harness	14
Correct shoulder height	16
Removing the ISOFix base	18
Care and maintenance	20
Notes	21

Vehicle usage



WARNING

In an accident, enormous forces occur. Never try to secure a child on your lap with the vehicle seat belt or by holding onto them. Secure your child in the car seat for every journey! Always secure the baby seat onto the vehicle seat in a rearward-facing position.

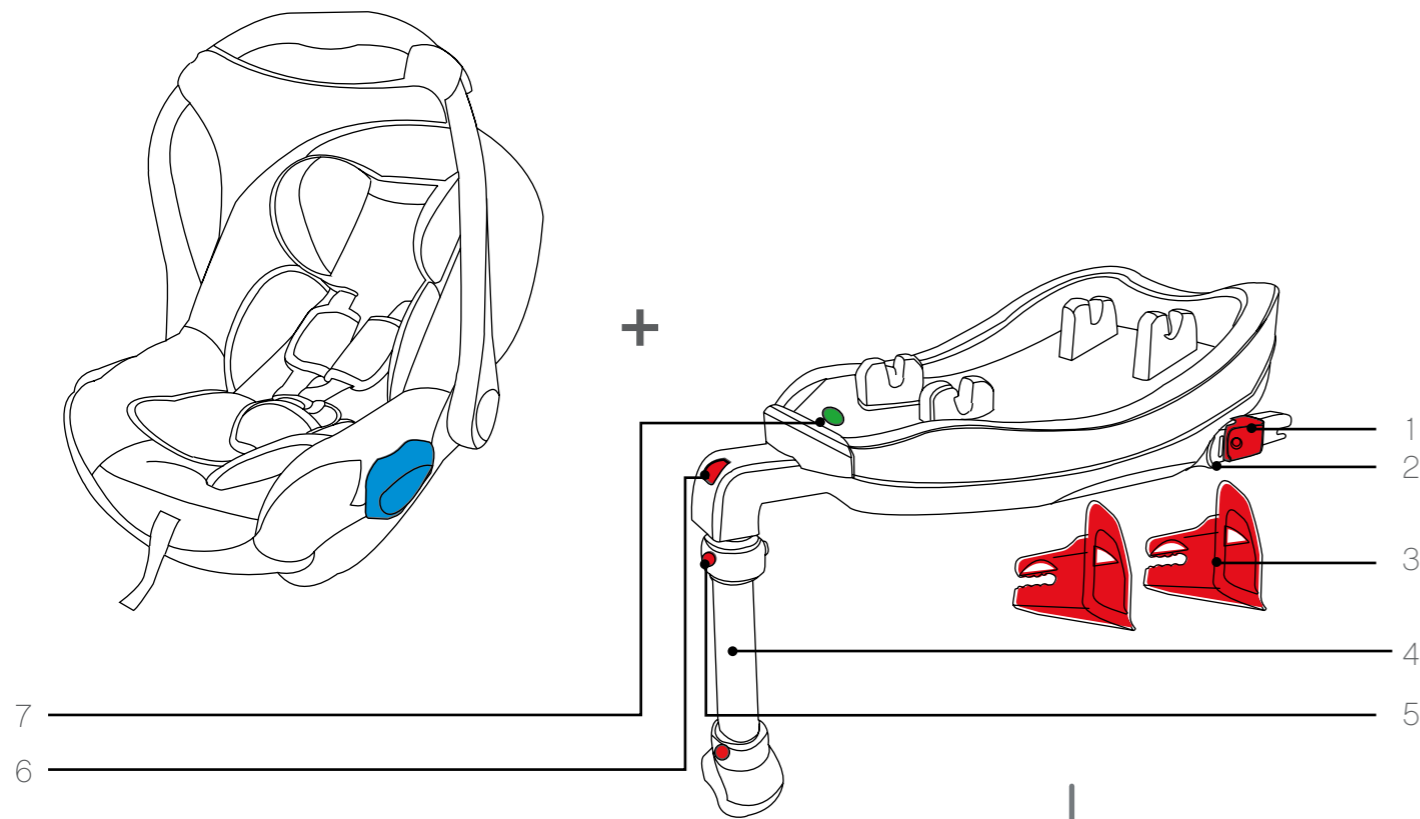
WARNING

An airbag hitting the baby seat can cause serious injuries to your child, possibly resulting in death.

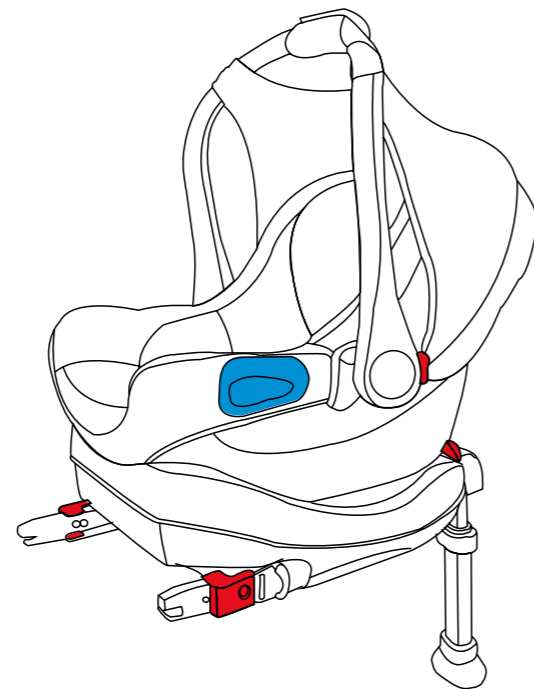
WARNING

An airbag hitting the baby seat can cause serious injuries to your child, possibly resulting in death.

Parts and fittings



- 1. ISOFix system
- 2. Connectors
- 3. Red plastic protectors for ISOFix system
- 4. Support leg
- 5. Button
- 6. Red button
- 7. Red lever



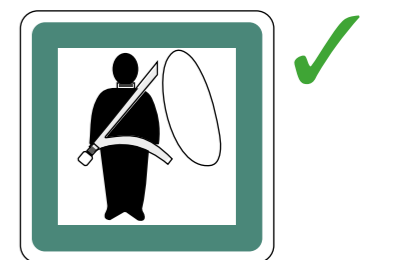
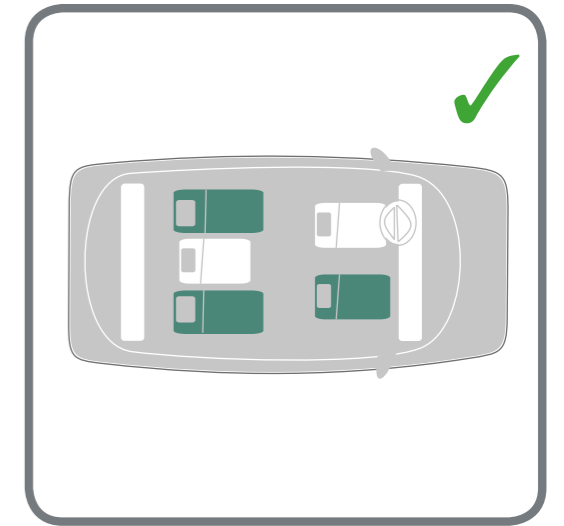
Fitting the ISOFix base

1. Fitting the base into a car which has ISOFix System

Installed on seats fitted with ISOFix anchor points (located between seat and seat back) & with leg room.

ISOFix installation markings should be green

Only install into seats with side air bags as oppose to front air bags



Fitting the ISOFix Base

WARNING

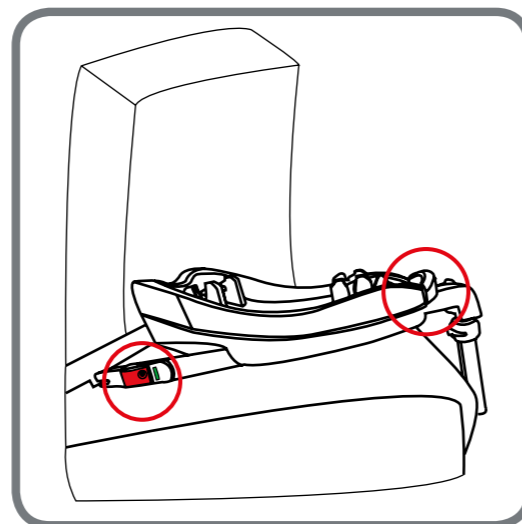
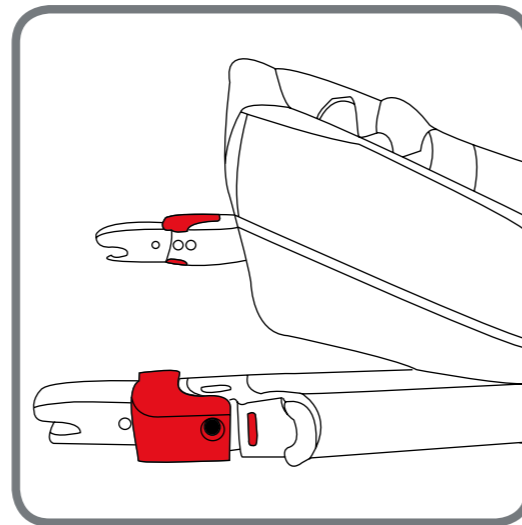
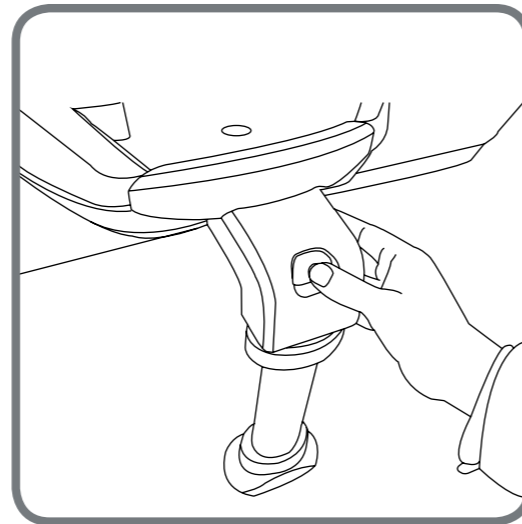
To install the ISOFix Child Restraint System, read the instruction manual carefully, the safety of your child is only guaranteed if the seat is used correctly. It is therefore important that you take the time to read these instructions through carefully. Check that the ISOFix Child Restraint System has been installed correctly.

1. Fitting the ISOFix base

Press the red button.

This will extend the ISOFix base.

Pull out the red lever until you hear a 'click' sound. The red lever should be in the out position. See next page for each lever

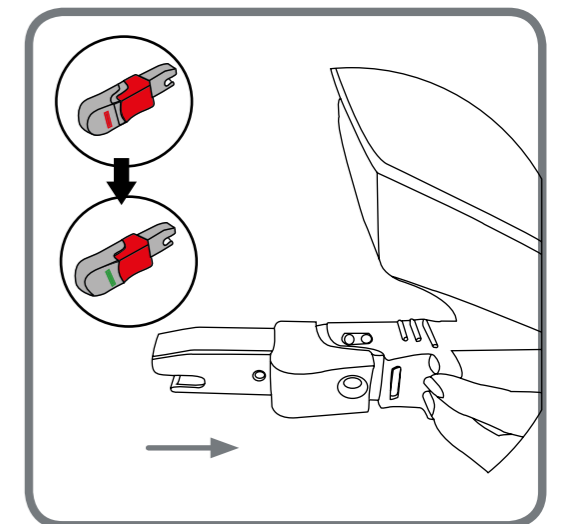
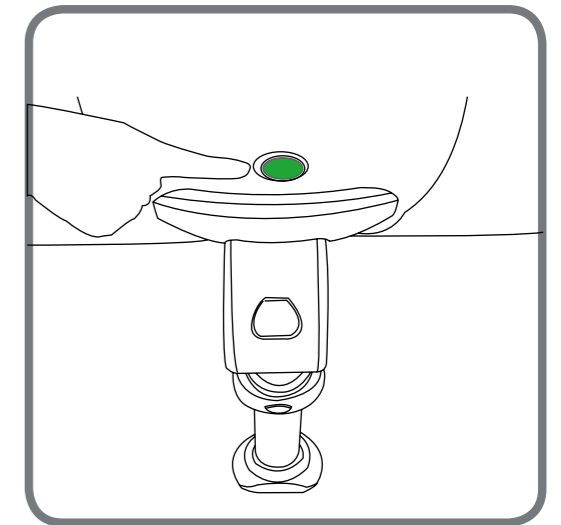
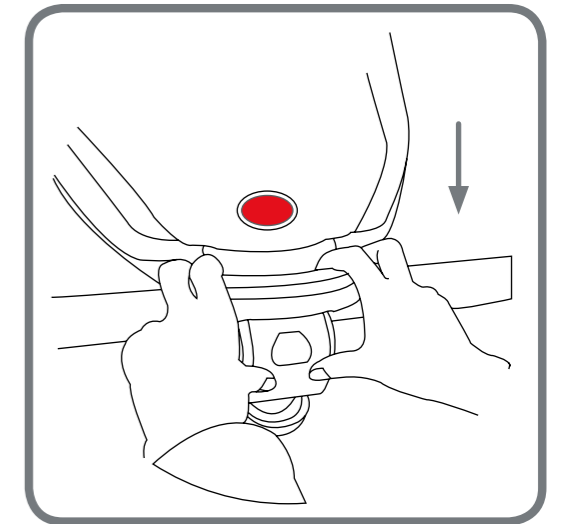


Fitting the ISOFix Base

Press the seat down into the ISOFix base.

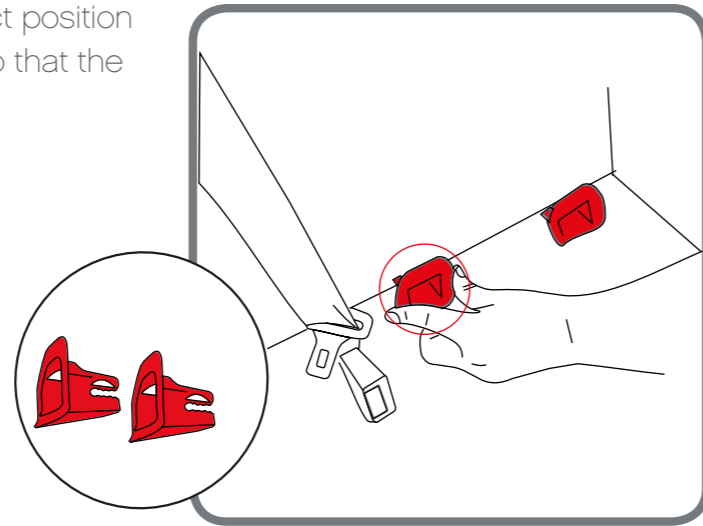
The base is installed correctly when the button is green.

Afterwards pull the black plastic coat of the ISOFix connectors so they change to green.

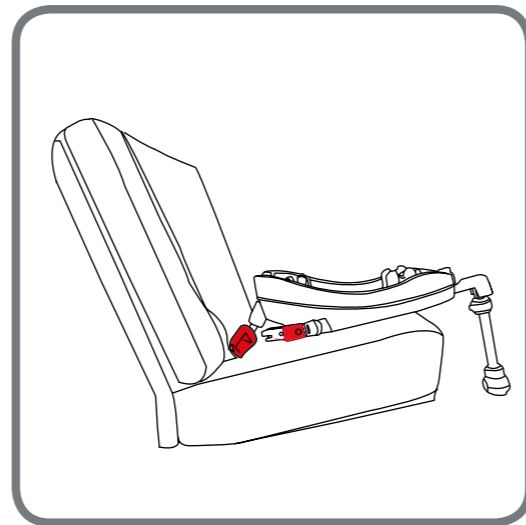


Fitting the ISOFix base

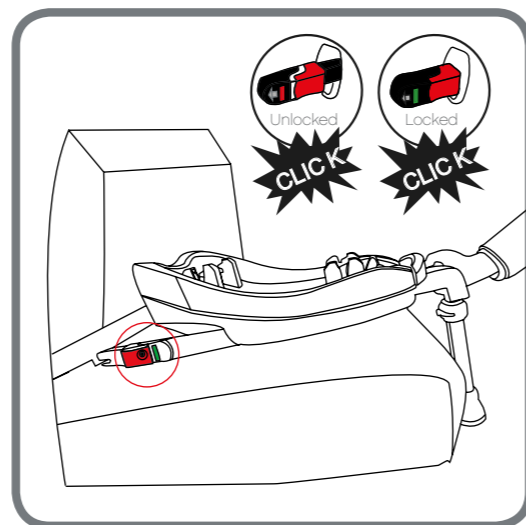
Put the red plastic protectors into the correct position on the car which is suitable for the ISOFix so that the connectors can fit into these protectors.



Place the ISOFix base on the car seat, make sure that the ISOFix connectors are aligned with the red plastic connectors you have just fixed in.



Push the ISOFix base towards the fixed point, make sure that the ISOFix base is locked on to the fixed point. Also make sure that the ISOFix connector window is green.



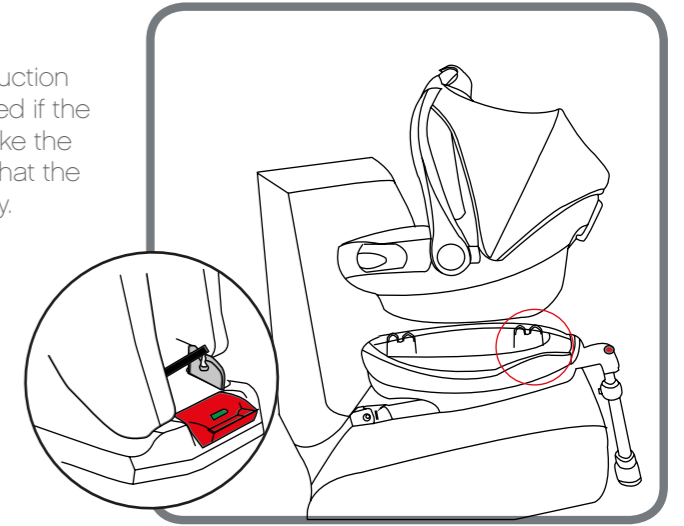
ISOFix child restraint system

WARNING

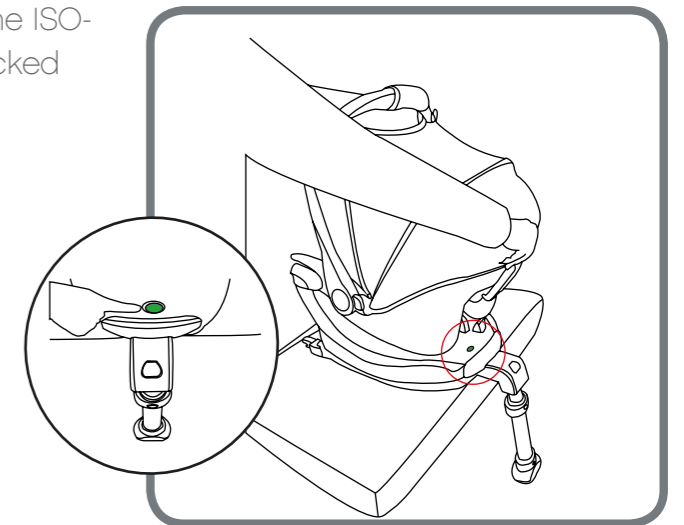
To install the ISOFix Child Restraint System, read the instruction manual carefully, the safety of your child is only guaranteed if the seat is used correctly. It is therefore important that you take the time to read these instructions through carefully. Check that the ISOFix Child Restraint System has been installed correctly.

1. Fitting the ISOFix child restraint

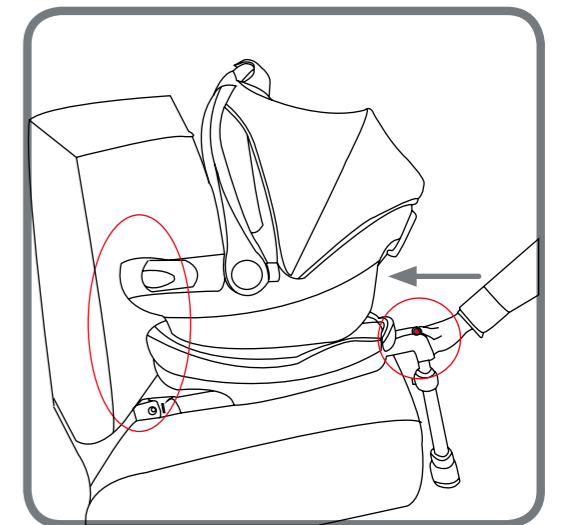
Place the baby car seat in the correct position on the ISOFix base. Push the child seat facing rearward firmly against the backrest of the car's seat.



Click the child seat with its 2 metal bars onto the ISOFix base until you hear a 'click'. It is then fully locked onto the ISOFix base.

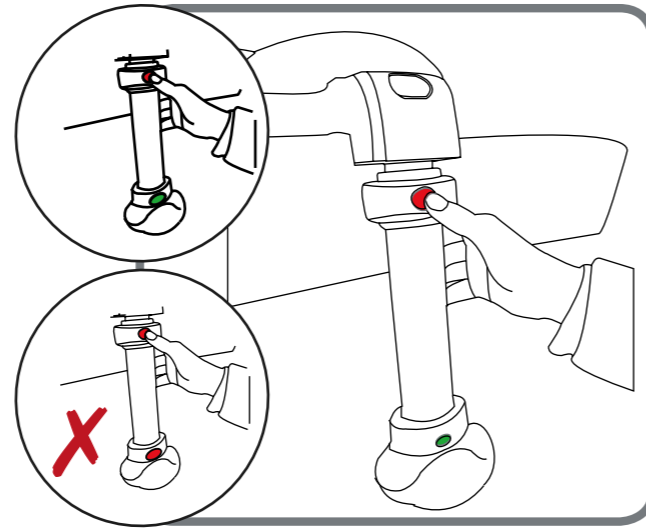


Push the baby car seat towards the backrest of the seat of the car so that the platform is tight against the car seat.

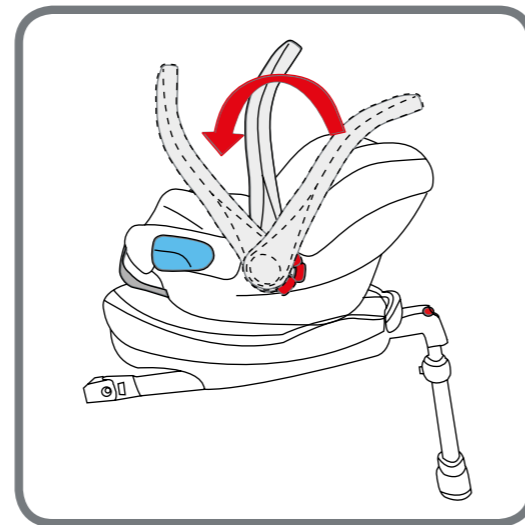


Installation

Press the red button on the support leg to extend it. Make sure the support leg is touching the floor. Check that the red button is now green in the support leg that is touching the floor.



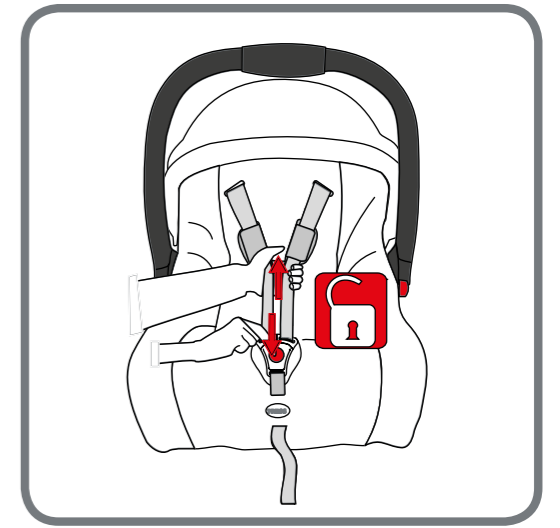
Adjust the child seat handle so it is in the straight position, ready to place your child into the baby car seat.



Loosening the shoulder straps

1. Opening the harness

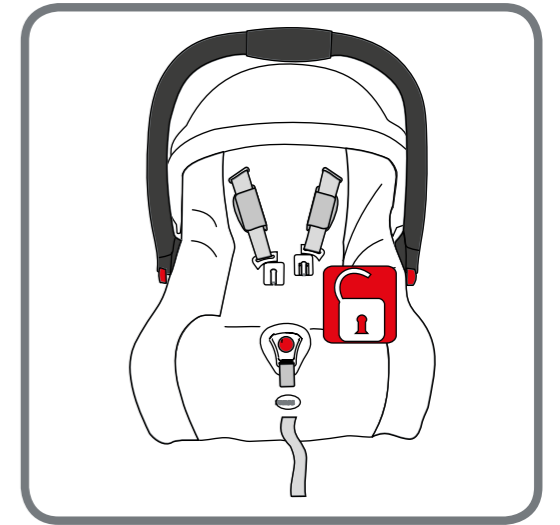
Press the red release button



Once the harness is released you can then place your baby in the baby car seat and then put the straps around your baby's shoulders.

WARNING

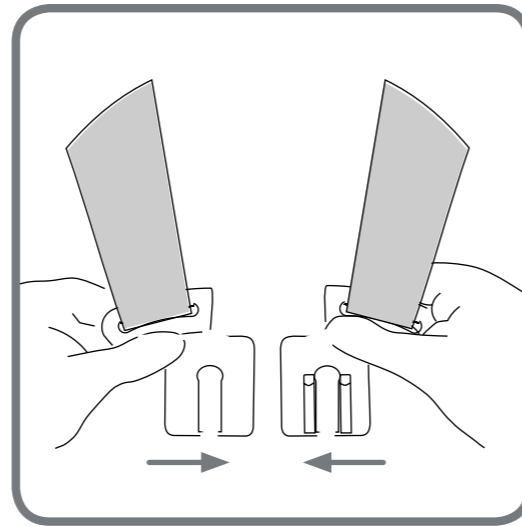
Do not twist or change the shoulder straps.



The Harness

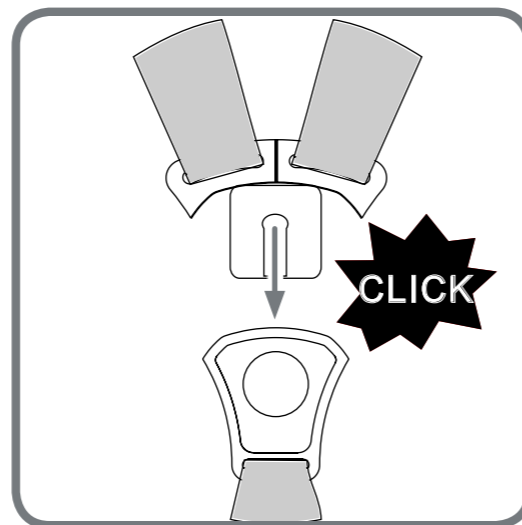
1. Fastening the harness

Slot the two plastic sections of the buckle connectors together.



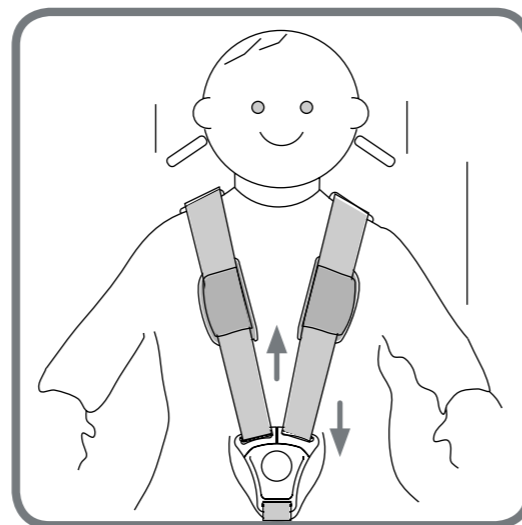
Slot the two connectors into the hole in the top of the buckle until they 'click' into place.

Caution: Put the two buckle tongues together and engage in the harness buckle with an audible click! click!



Always check the harness is correctly locked by pulling above and below the buckle.

Caution: Tighten the straps until they are in contact with your baby's body. The hip belt must lie as low as possible over your baby's hips.



The Harness

The harness should be adjusted as tightly as possible without causing discomfort to the child. A loose harness is dangerous and should be checked each time that you use the seat. To tighten the harness, pull down on the adjustment strap until the harness is the correct tightness.

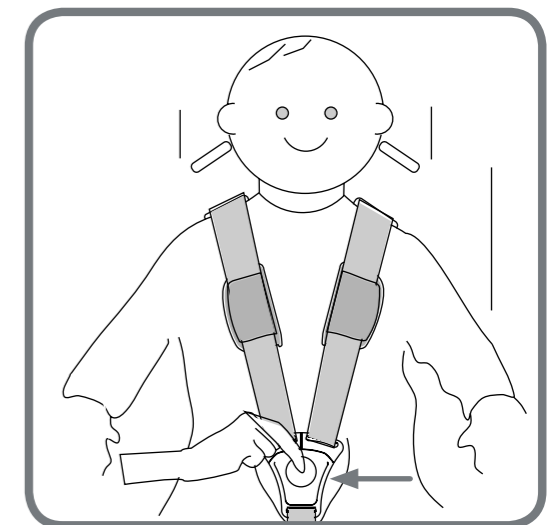
Caution: Pull on the adjusting straps until the harness lies flat and is in contact with your child's body. Pull out the adjusting strap straight. There should never be more than one finger's width of space between the shoulder straps and your child's shoulders.

The harness is loosened by pulling on both straps at the same time press down on the harness adjuster.



2. Unfastening the harness

To release the harness, push the red button in the middle of the harness buckle inwards. You can now lift your child from the seat; ensure that the buckle connectors do not catch on clothing.



Correct Shoulder Height

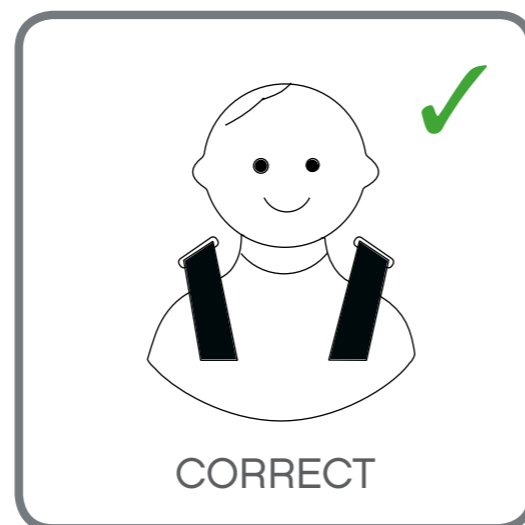
1. Before the car seat is installed in the vehicle

The harness has 2 positions. The straps should go in to the slots at, or nearest slots above the height of the child's shoulders. To adjust the harness, remove each strap by passing it through the slots from the front to the back of the seat; re-route the straps through the appropriate slots. If the shoulder height is not ok, please re-install the seat again.



2. Checklist to ensure that your baby is in the car seat correctly

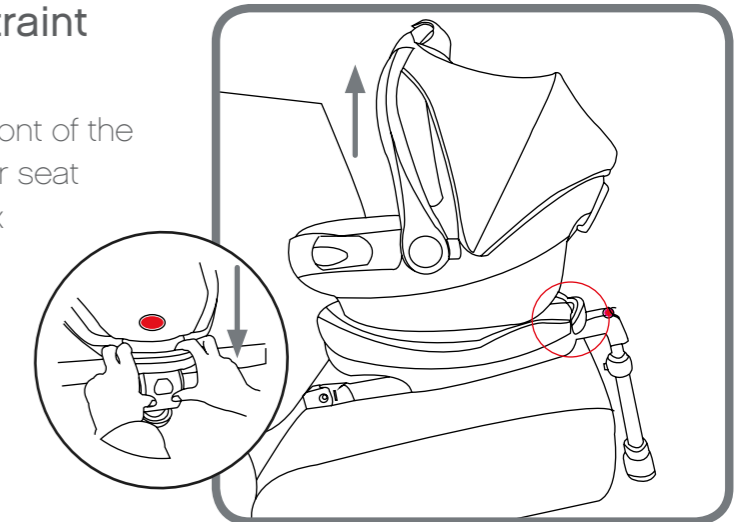
- a) The straps of the child safety seat are close to the body without constricting the child.
- b) The shoulder straps are adjusted correctly.
- c) The straps are not twisted.
- d) The tongue from the adult seat is engaged correctly from the vehicle.



Removing the ISOFix base

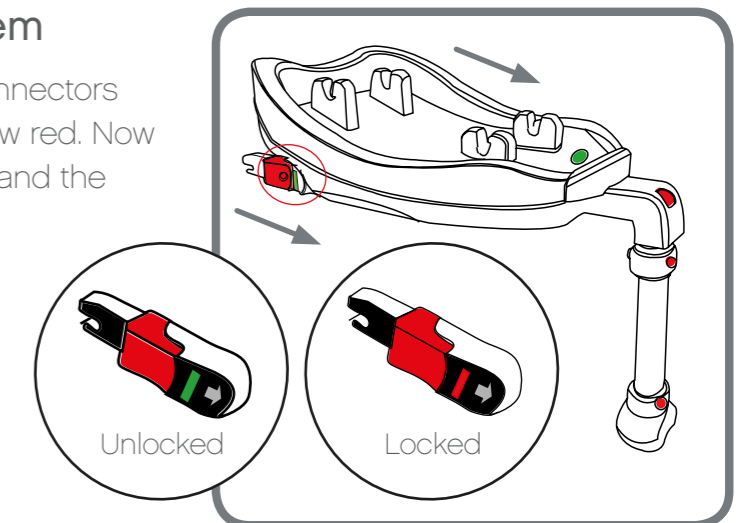
1. Removing the ISOFix car restraint

Ensure the car seat carry handle is in the upright position, Pull the red lever on the front of the ISOFix base upwards towards the baby car seat to remove the child car seat from the isofix base.

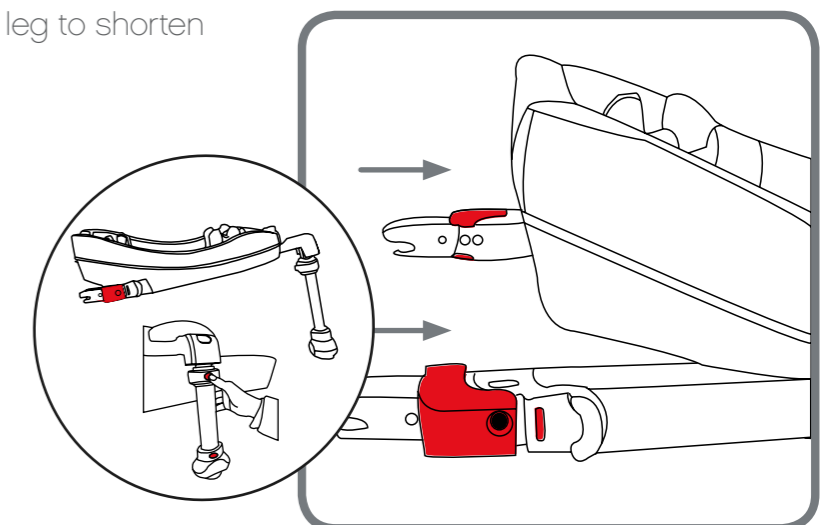


2. Folding away the ISOFix system

Pull the black plastic coat of the ISOFix connectors to make the isofix connectors in the window red. Now release the car seat from the ISOFix base and the ISOFix connectors.

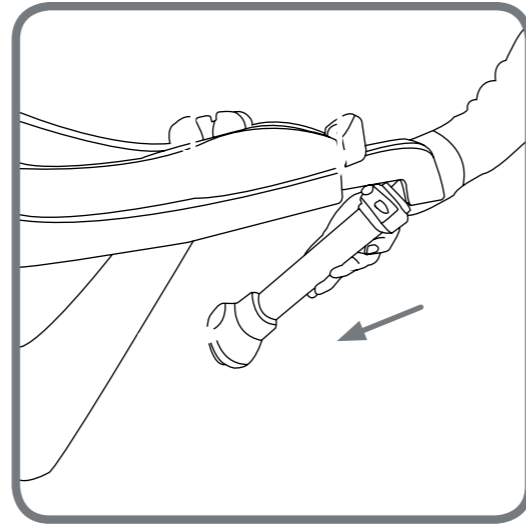


Press the red button on the support leg to shorten the length.



Removing the ISOFix base

Put the support leg into the isofix base slot.



Care and Maintenance

Removing the cover

The fabric cover can be easily removed for washing. Remove the harness by gently feeding the straps through from the front to the back of the seat, the crotch strap including the buckle should be removed; turn the metal slide underneath the shell on its side and feed it through the shell until the strap is free. Remove the cover and machine wash at 30, line dry only.

To replace the fabric cover, follow reverse of the above.

Cleaning the seat cover

The cover should only be hand washed and follow instructions when washing.



Hand wash only

Do not dry clean



In water below 30°

Do not iron



Do not use bleach / chlorine



Use only a mild hand soap

Warning

Do not use undiluted neutral detergent, gasoline or other organic solvents to clean the main body. Otherwise damage may be caused to the main body.

Environment

Keep all plastic packaging materials out of reach of your child to avoid the risk of suffocation.

For environmental reasons, when you have stopped using this product, we ask that you dispose of the product in the proper waste facilities in accordance with local legislation.



Join Us



Follow us on Facebook
TuttiBambiniUK



Follow us on Twitter
TuttiBambiniUK



Follow us on Instagram
TuttiBambiniUK

www.tuttibambini.com